

Intouch History Exporter User Guide

WMkit Software

Last Updated: 12 May 2022

1. Why ITHistExporter

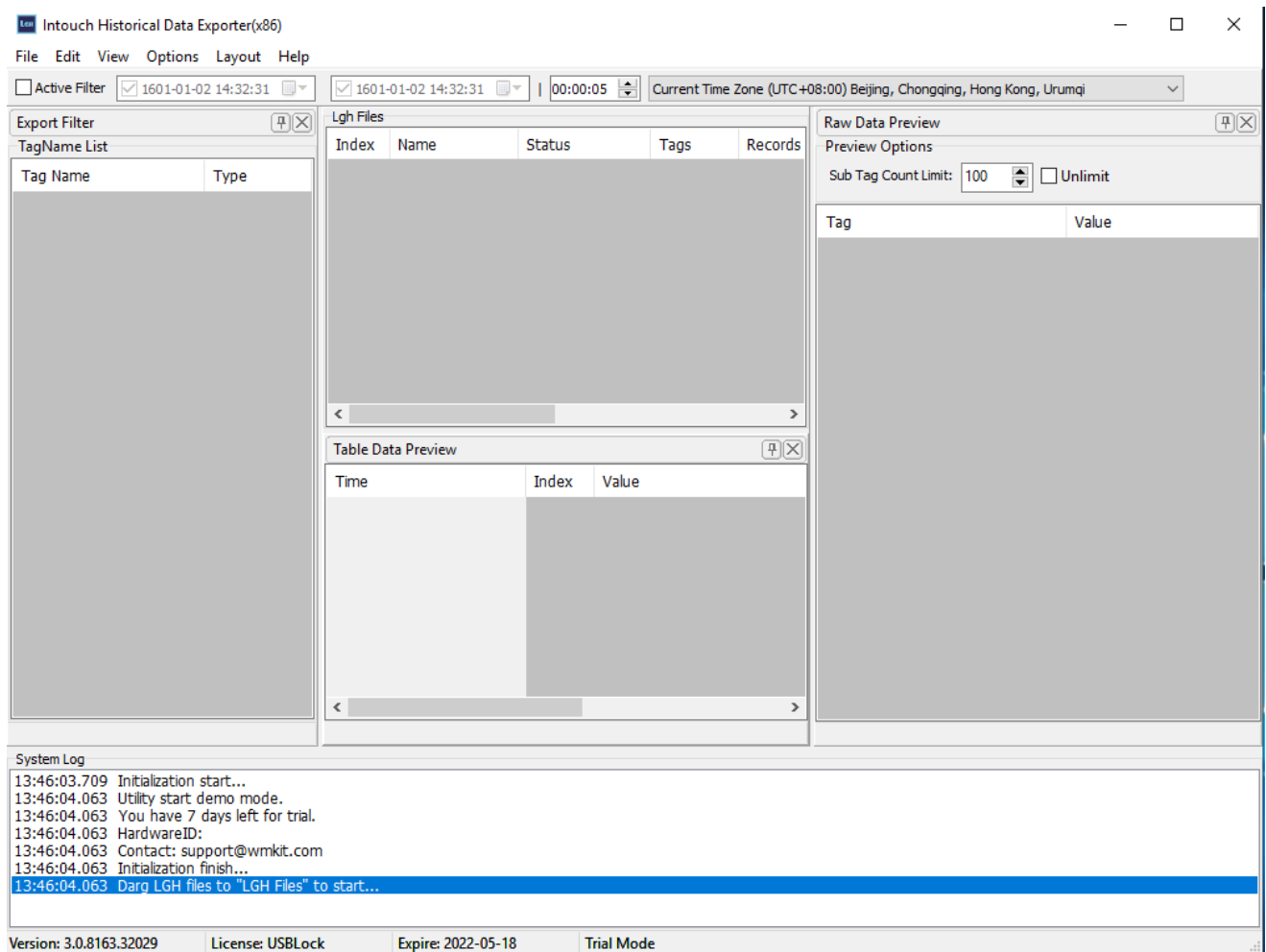
ITHistExporter is a utility for Windows user. Use it to open and read LGH files effortlessly through an easy and intuitive user interface. There is no dependency on the HistData utility or the InTouch HMI software. Also, you don't have to write any code for it.

"LGH" is the historical log files' extension for stand-alone InTouch HMI software. Typically, historical data is stored in one file per day. In the past, we need HistData tool in InTouch HMI software and write some code to export the data, the use of such tools is not simple and inconvenient.

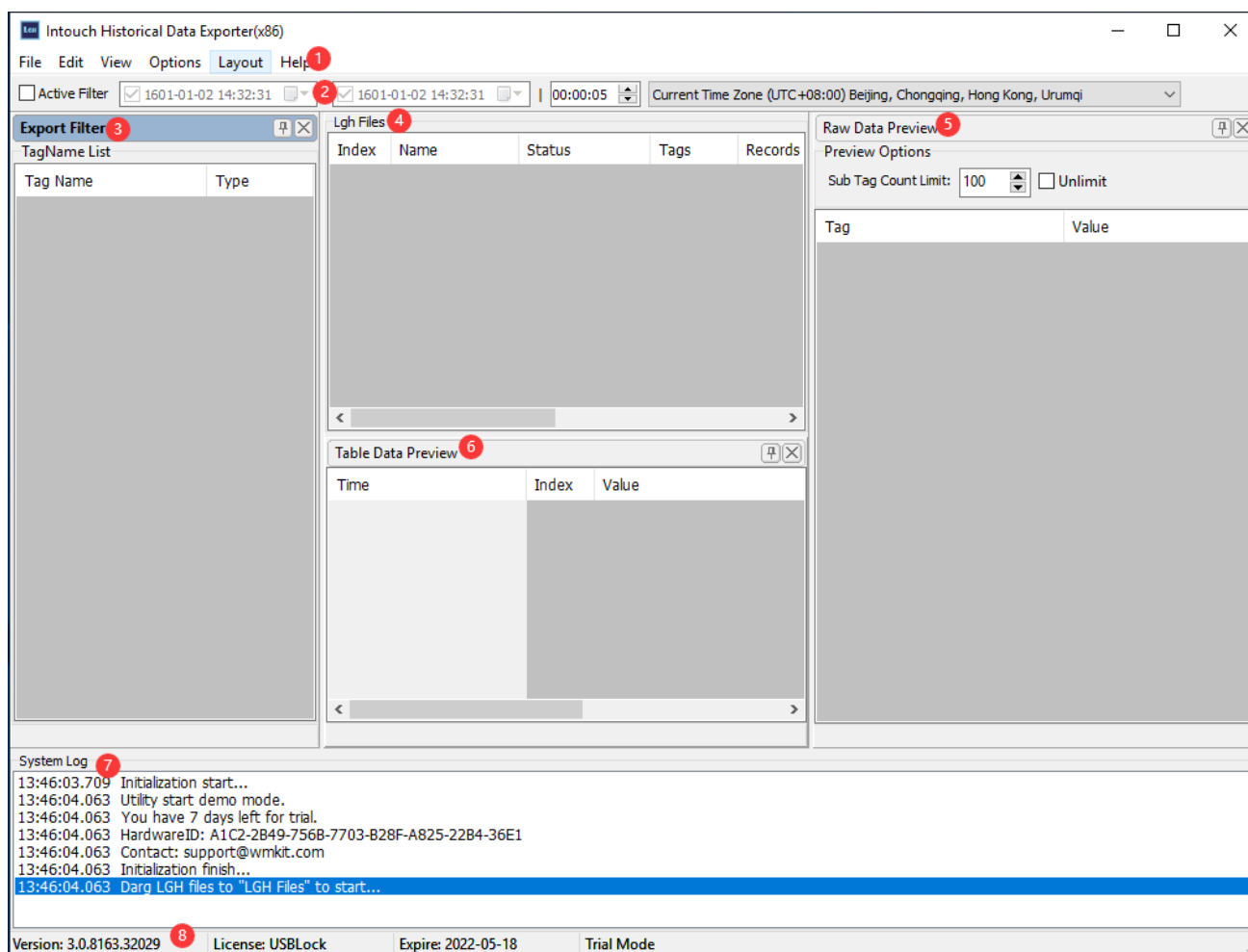
ITHistExporter can easily open and read LGH files through a simple and intuitive user interface, enabling plant operators, engineers and managers can use it to query one or more InTouch tags within a given time frame, then export the results. ITHistExporter does not depend on any InTouch HMI software components, this means you can run it on any Computer.

2. User Interface

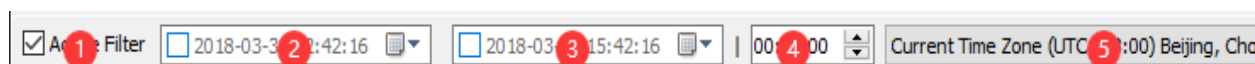
ITHistExporter provides a flexible and easy to use user interface (GUI) to help you to process LGH files.



Main window of ITHistExporter was split to eight areas, you can see the division below.



- 1) Main Menu
- 2) Filter ToolBar



- 1) Active Filter: Use this switch to enable or disable the filter.
- 2) Filter Time Start: Use this time picker to choose the Filter started timestamp.
- 3) Filter Time End: Use this time picker to choose the Filter ended timestamp.
- 4) Intervals: Records intervals for Table Data. THIS IS FOR TBALE DATA ONLY.
- 5) Time Zone: Time zone for Filter and display.

- 3) Export Filter
- 4) LGH File List Panel
- 5) Raw Data Preview Window
- 6) Table Dara Preview Window
- 7) System Logs
- 8) Status Bar

3. System Requirements

This program runs under:

- Windows XP SP1
- Windows Server 2003, Windows Server 2003 x64
- Windows Vista, Windows Vista x64
- Windows Server 2008, Windows Server 2008 x64
- Windows 7, Windows 7 x64
- Windows Server 2008 R2
- Windows 8, Windows 8 x64
- Windows Server 2012
- Windows Server 2012 R2
- Windows 10, Windows 10 x64
- Windows 11, Windows 11 x64

4. Add LGH Files

Here are three ways to add LGH files:

- 1) Select LGH files, drag them to LGH file list panel.
- 2) Use Main menu to add LGH file, the method only support single LGH file.
- 3) Use Scan LGH files to search and add LGH files in specific folder.

5. Analyse LGH Files

Use Main menu of right menu of LGH file list panel to analyse LGH files.

- 1) Analyse: Analyse the selected file;
- 2) Analyse All: Analyse all files in LGH file list panel.
- 3) Analyse Checked: Analyse the checked file;

6. Preview LGH File

Use Main menu of right menu of LGH file list panel to preview LGH files.

- 1) Preview(Raw Data): Load data in the selected LGH file and preview the data in raw data mode.
- 2) Preview(Table Data): Load data in the selected LGH file and preview the data in raw table mode.

7. Data Mode

7.1 Raw Data

Raw data is the recommended mode, in this mode the software will extract the data directly, this means the data are all raw data untouched.

If you want to export the data in LGH files to other data process software, you should choose this mode, because the data are lossless.

7.2 Table Data

Table mode is new modes. In these mode, data will be exported in specific time intervals. The data in LGH files were recorded in different intervals, so data will be processed to meet the time alignment before exporting.

7.3 Difference

In Raw Data mode, each record data is exported in single line, while in Table Mode, records which with same timestamp will exported in same line. This is very usable in some scenarios such as data reporting.

Here is a tale show the difference of Raw Data and Table Data mode. N/A means value not available.

Raw Data				Table Data	
Tag	Timestamp	Type	Value	Time	TWKT
TWKT	2018-04-26 00:00:00 906	REAL	0	2018-04-26 00:00:00 000	0
TWKT	2018-04-26 00:22:19 828	REAL	0	N/A	
N/A				2018-04-26 00:30:00 000	0
N/A				2018-04-26 00:30:00 000	0
N/A				2018-04-26 01:00:00 000	0
N/A				2018-04-26 01:30:00 000	0
N/A				2018-04-26 02:00:00 000	0
N/A				2018-04-26 02:30:00 000	0
TWKT	2018-04-26 02:39:15 328	REAL	0	N/A	
TWKT	2018-04-26 02:39:23 875	REAL	587	N/A	
N/A				2018-04-26 03:00:00 000	587
TWKT	2018-04-26 03:39:14 859	REAL	594	N/A	
N/A				2018-04-26 03:30:00 000	594
N/A				2018-04-26 04:00:00 000	594
N/A				2018-04-26 04:30:00 000	594
TWKT	2018-04-26 04:39:14 843	REAL	597	N/A	
N/A				2018-04-26 05:00:00 000	597
N/A				2018-04-26 05:30:00 000	597
TWKT	2018-04-26 05:39:14 906	REAL	598	N/A	
N/A				2018-04-26 06:00:00 000	598

8. Filter Function

Active Filter should be checked to filter Tag name and timestamp. In order to fetch tag name list, you should do an analysis first.

Active Filter switch and timestamp are available on Filter ToolBar.

Use popup menu of Export Filter panel to choose specific tag types, you can also check the tag you need directly.

Another way to check tag is use the sync function of Raw data preview.

9. Export Data

Use Main menu of right menu of LGH file list panel to analyse LGH files.

CSV and JSON file format are supported for data export.

File format and Data Mode should be checked in Main Menu-Options.

The default file format is CSV and default Data Mode is Raw Data mode.

10. License

This utility is a shareware, so you need a license to run this software.

For information on purchasing or upgrading a license, visit:

<https://www.wmkit.com/downloads/intouch-historical-data-exporter>

10.1 Evaluation Mode

You can evaluate this software for free in 7 days. Without valid license, the number of records can be exported are limited. After 7 days the program will require a license key to continue working. No other limitation.

In Raw Data mode, records are limited to 100 for each tag;

In Table Data mode, records are limited to 25 for each tag;

10.2 License Issue

License will be bound to a USB flash disk, and you must not change the partition of the USB flash disk.

We need your Hardware ID to generate the license, you can find it on the software. The format of the hardware ID is:

1111-2222-3333-4444-5555-6666-7777-8888

10.3 License Limitation

License is time limited, that means you are not able to use the software when your license expired. Example:

License issue at Apr-12-2025, it will be expired at Apr-12-2026, after Apr-12-2026, you need to purchase a renew license.

Renew license include one year expand for expiration date.

11. Privacy

We will never provide, exchange, rent or sell any of your personal information to other individuals, groups, private enterprises or public authorities.

The privacy policy of this program will be amended at any time in accordance with the needs, the revised terms will be published on our website.